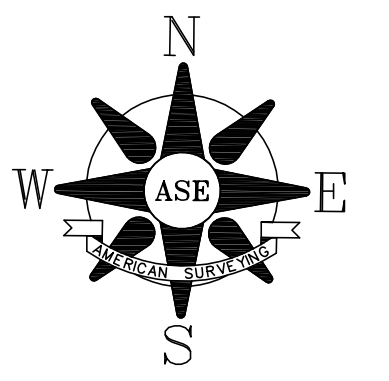
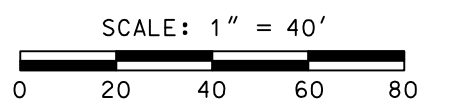


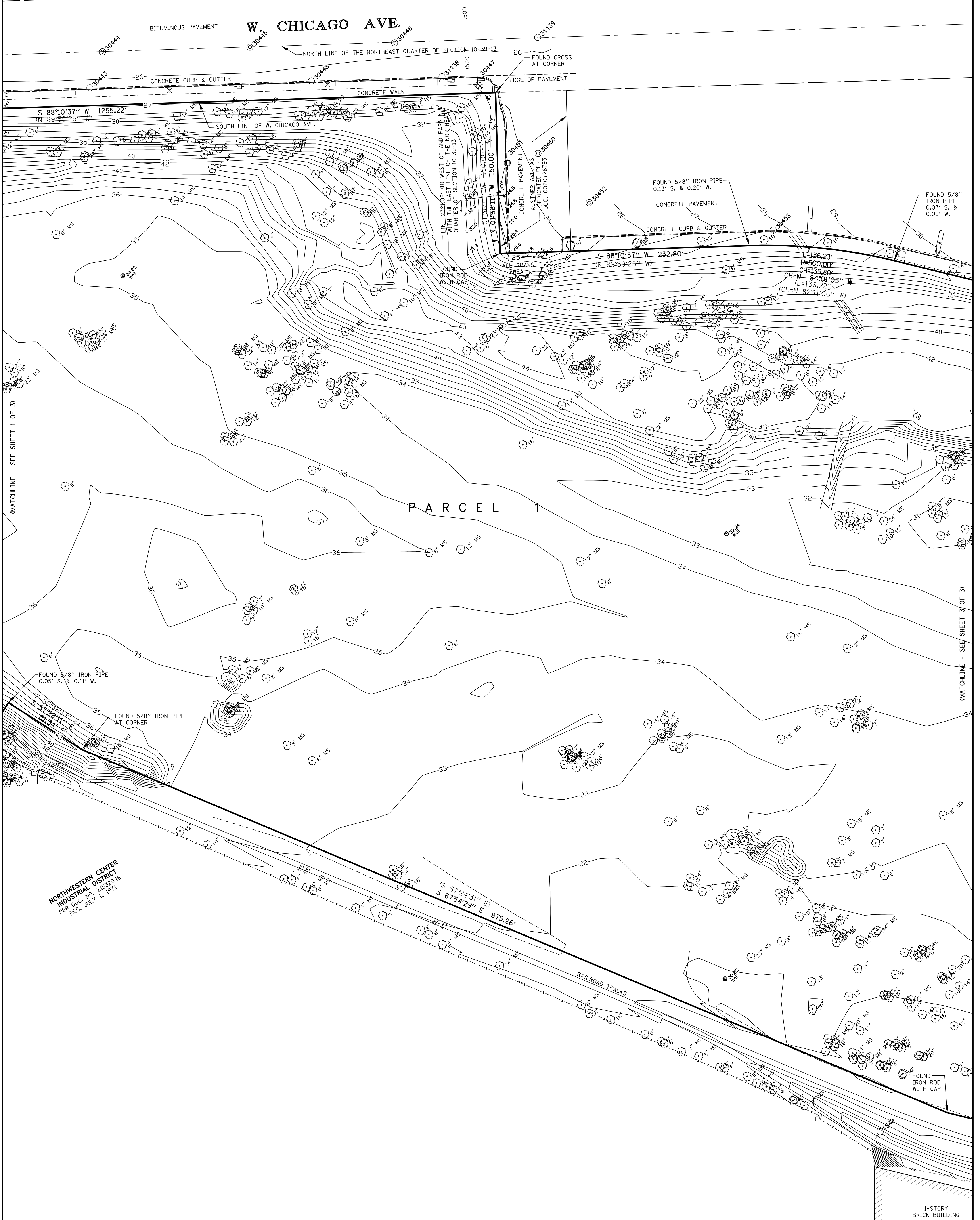
BOUNDARY & TOPOGRAPHIC SURVEY



BEARINGS AND COORDINATES ARE REFERENCED TO THE ILLINOIS STATE PLANE COORDINATE SYSTEM, EAST ZONE, NORTH AMERICAN DATUM OF 1983 (2011 ADJUSTMENT).




N. KOSTNER AVE.
(66')



MATCHLINE - SEE SHEET 1 OF 3

MATCHLINE - SEE SHEET 3 OF 3

NORTHWESTERN CENTER INDUSTRIAL DISTRICT
PER DOC. NO. 21532046
REC. JULY 1, 1971

 <p>AMERICAN SURVEYING & ENGINEERING, P.C. SURVEYORS - ENGINEERS - GEODESISTS - MAPPING SCIENTIST ILLINOIS PROFESSIONAL DESIGN FIRM NO. 184-003192</p> <p>841 N. Galena Ave. 150 N. Wacker Dr. Suite 2650 888 S. Edgelawn Dr. Suite 1725 Dixon, IL 61021 Chicago, IL 60606 Aurora, IL 60506 815-288-9231 / Fax 815-288-6277 312-277-2000 / Fax 312-277-2002 630-897-4109 / Fax 630-897-4121</p>	CLIENT: AMEC FOSTER WHEELER ENVIRONMENTAL INFRASTRUCTURE	LOCATION: 4301 W. CHICAGO AVE., CHICAGO	
	PIN SURVEYED: 16-10-200-061-0000	PROJECT NO: 217127	DATE: 12/18/2017
	PROJECT: 4301 W. CHICAGO AVE., CHICAGO	TASK ORDER:	DRAWN BY: J. NOCON